

Adalogical Ænigmas

No. 9

Gentle patron,

Summer is once again upon us, the year having spun its way 'round its circular course in its accustomed fashion, sweeping us along in its wake. Sometimes, I must admit, I find this swirling dance of the seasons somewhat vertiginous, the dizzying annual rotation never quite stopping long enough for one properly to appreciate any one of the stations in its progression.

This ænigma is inspired by my spinning disorientation.

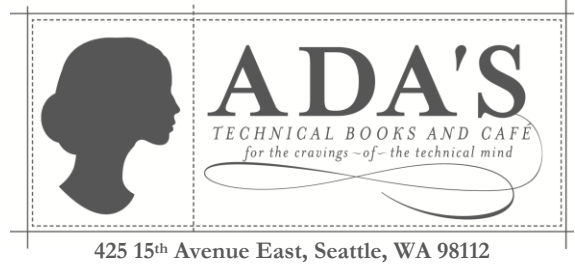
The grid below is to be partitioned along the lines into a set of *regions*, each containing exactly *one* of the black or white dots. Every square must participate in some region.

The shape of *every* region must be rotationally symmetric around its included dot. That is, if you were to rotate the region 180° around its dot, its shape would be unchanged.

Once you've completed your division of the grid, you can move on to finding the final answer to my ænigma. Fill each region with the same colour as the dot it includes: regions with black dots should be darkened, and those with white dots left uncoloured. After having done so, the resulting picture should yield a clue to your final answer. In this ænigma, the answer is plural.

Good luck!

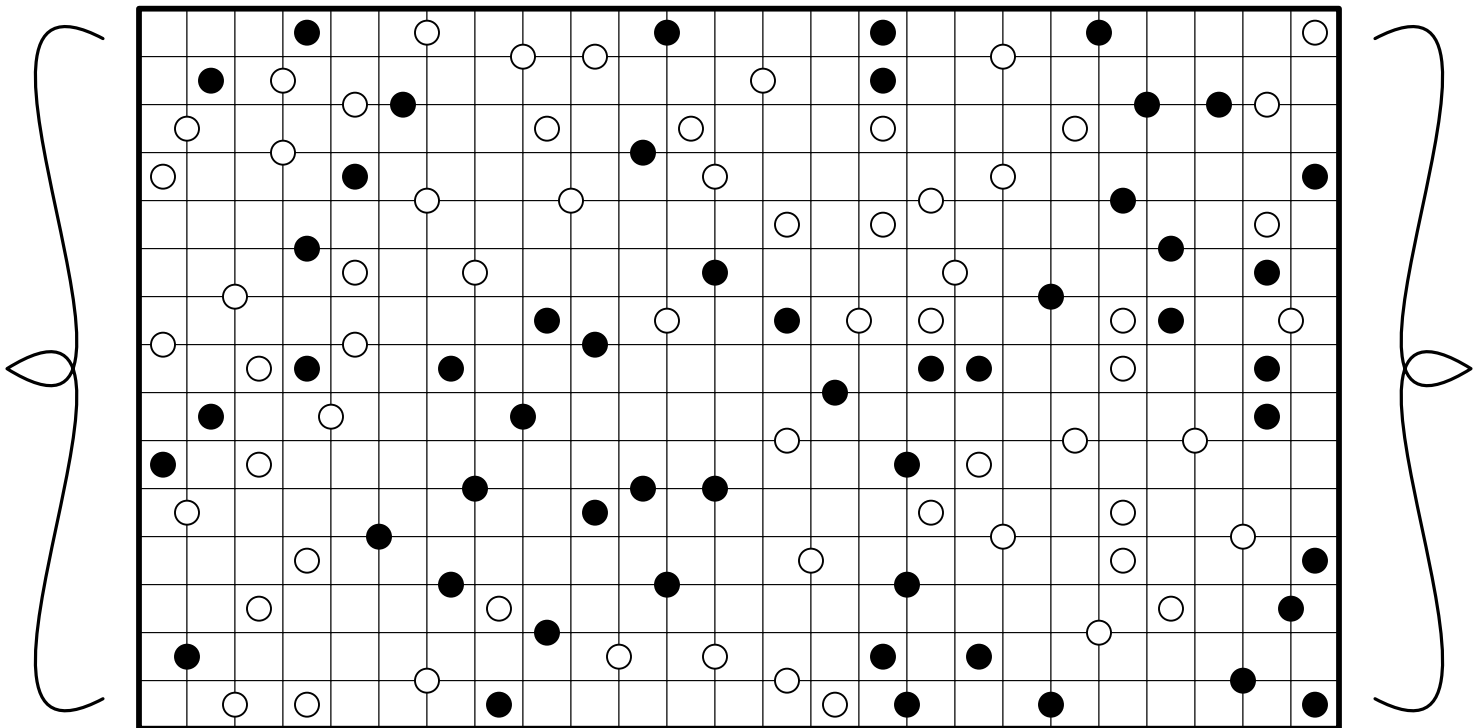
Ada



Example

**Answer:
LOCK**

Need assistance with Ada's ænigma? Hints and other help are available at <www.pavelspuzzles.com/adas/9>



Fill in your answer and give to a cashier for your prize.

This month's prize: **one free non-alcoholic drink!**

(Limit one per solver. Offer available through 7/31/2014.)