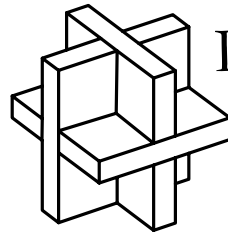


# Adalogical Ænigmas

No. 86 of 100



## Pavel's Puzzles

High-quality mechanical and logic puzzles, direct from the designer!

<http://www.pavelpuzzles.com>

Please help support the Adalogical Ænigmas for just \$1 per month!  
[www.patreon.com/aenigmas](http://www.patreon.com/aenigmas)



Gentle solver,

I recently received an interesting missive from my long-time acquaintance Mr Jonah Ostroff (he who contributed our 8<sup>th</sup> *Ænigmatic Addendum*). As is my own wont in these our present circumstances, Mr Ostroff quite frequently rambles some of the many hiking trails with which we are locally blessed. On this *particular* occasion, however, he found himself quite thoroughly and unexpectedly *lost!* Upon later investigation, he was able to discover the *reason* for his unaccustomed missteps: it transpired that several of the crucial directional trail indicators had been placed in the wrong locations!

Mr Ostroff's experience provided the inspiration for my present ænigma.

The grid on the following page represents a local wilderness, with the decorated squares standing for the trail signs, some of which are incorrectly placed: the signs *should* be positioned such that each sign's arrows point at *all* of its *nearest* neighboring signs. For example, the sign labeled 'B' in the example below is *not* correct in its initial position: its horizontal neighbor, the 'L', is three squares away, while its vertical neighbor, the 'P', is *four* squares away, so the 'B' should only be pointing to the 'L', its sole *nearest* neighbor. Pray shift *some* of the signs horizontally or vertically to new positions, leaving other signs as they are. Signs may not be shifted through or into any grid square that was ever occupied by another sign.

Once you have completed your placements, you may move on to finding the final answer to my ænigma. Using the signs' *final* positions, advance each sign's letter in the alphabet (wrapping around from Z to A as necessary) by the sum of the distances that its nearest neighboring signs were shifted. Reading the resulting letters in left to right, top to bottom order will reveal a clue to your final answer.

Good luck!

*Ada*

Example

↓

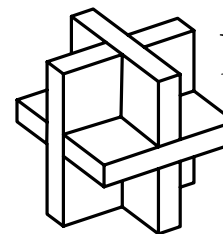
L + 1 = M	Q + 1 = R
I + 0 = I	A + 4 = E
Q + 2 = S	B + 1 = C
C + 1 = D	T + 0 = T
H + 1 = I	P + 3 = S

**Answer:**  
MISDIRECTS

Need assistance with Ada's ænigma? Hints and other help are available at [www.pavelpuzzles.com/aenigmas/86](http://www.pavelpuzzles.com/aenigmas/86)

# Adological Ænigmas

No. 86 of 100



## Pavel's Puzzles

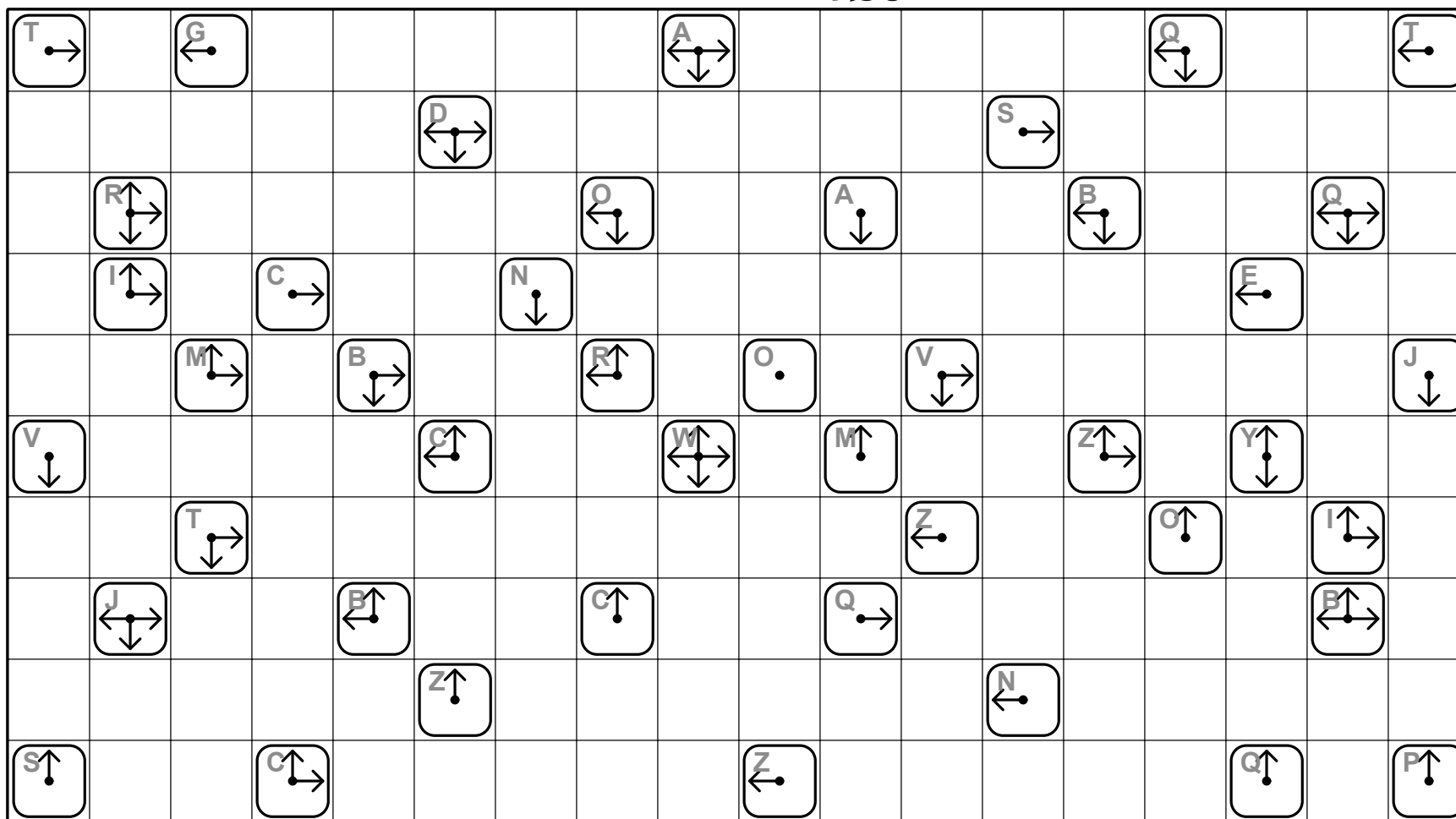
High-quality mechanical and logic puzzles, direct from the designer!

<http://www.pavelpuzzles.com>

Herewith I present a *brief* recapitulation of the rules for solving this ænigma:

- Shift some of the signs horizontally or vertically, leaving others where they are.
- Signs mayn't be shifted through or into squares that were ever occupied by another sign.
- After the signs have been shifted, each sign's arrows must point to *all* of that sign's nearest neighboring signs, looking only horizontally or vertically.

*Ada*



Send your answer to [aenigma@pavelpuzzles.com](mailto:aenigma@pavelpuzzles.com) by 12/31/2020: you'll earn a **10% discount** at Pavel's Puzzles and could win a **free physical puzzle!** Details at [www.pavelpuzzles.com/aenigmas/86](http://www.pavelpuzzles.com/aenigmas/86).