

# Adalogical Ænigmas

No. 30

Gentle solver,

Recently, my long-time associate Mr Curtis has been quite consumed with the production of his very *own* ænigma, inspired in no small part, he says, by his observations of *my* monthly efforts. When he at last completed his labours and allowed me the *honour* of assaying the results, I was so taken with it that I at once conceived the notion of presenting *his* work this month in the place of mine.

He has *graciously* agreed to my plan, and so here I present his ænigma for your enjoyment. Pray note that, unusually, this one occupies *two* pages.

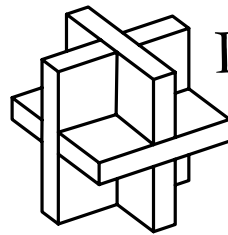
On the second page, you will discover a set of *pentominoes*, shapes made up of five connected squares. Your first task is to *assemble* those shapes, without any overlapping, to fill the space inside the outermost cells of the grid below. You may need to rotate or even *reflect* the shapes before placing them.

Then, please partition the *complete* grid (including those outermost cells) along grid lines into regions, each of which contains *exactly* one dot and is rotationally symmetric around said dot. That is, if you were to rotate any region 180° around its dot, its shape would be *unchanged*. Every grid square must be included in one such region.

Once you've completed the work of drawing your regions, you may simply *darken* all regions that contain a *black* dot to reveal a clue to your final answer.

Good luck!

*Ada*



## Pavel's Puzzles

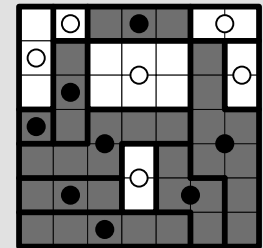
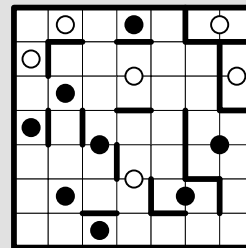
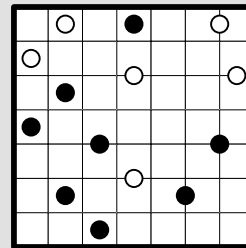
High-quality mechanical and logic puzzles, direct from the designer!

<http://www.pavelspuzzles.com>

Help support the Adalogical Ænigmas:  
[www.patreon.com/aenigmas](http://www.patreon.com/aenigmas)

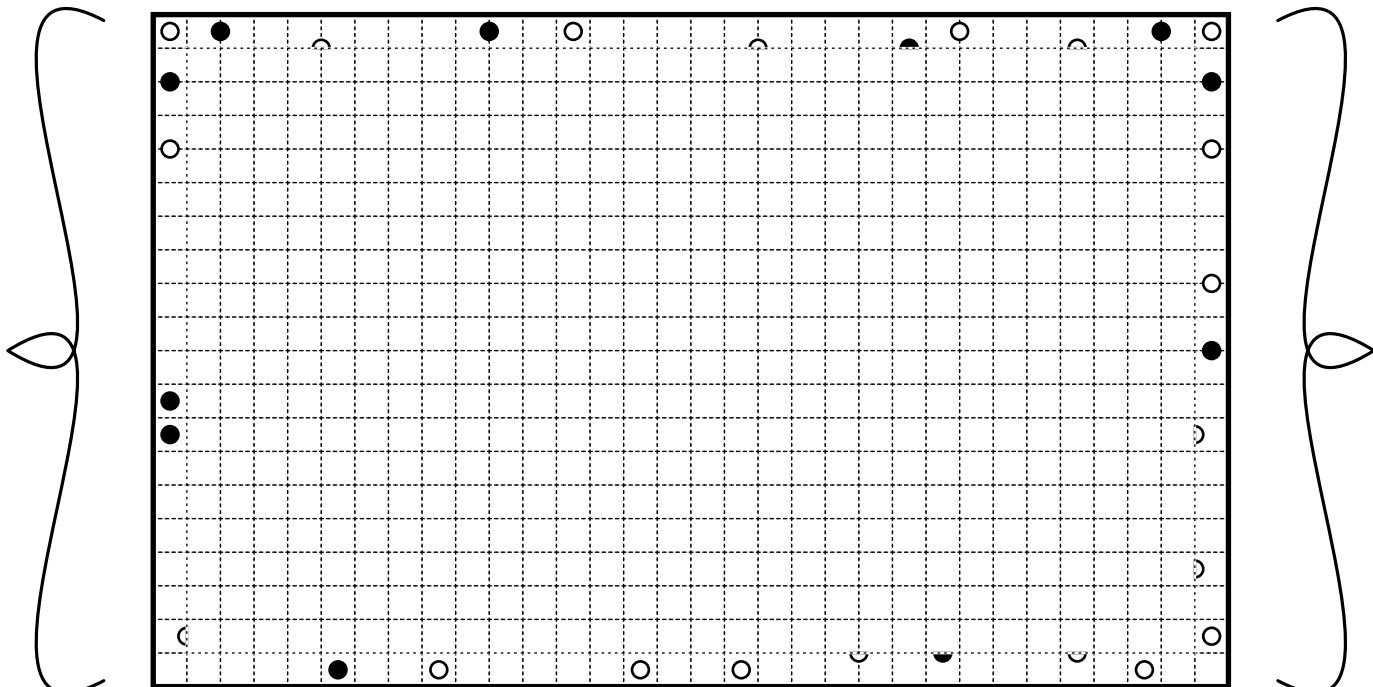


### Example



Answer:  
LOCK

Need assistance with Ada's ænigma? Hints and other help are available at [www.pavelspuzzles.com/aenigmas/30](http://www.pavelspuzzles.com/aenigmas/30)



Send your answer to [aenigma@pavelspuzzles.com](mailto:aenigma@pavelspuzzles.com) to enter the drawing for a **free physical puzzle** and to earn a **10% discount** at Pavel's Puzzles! Full details are at [www.pavelspuzzles.com/aenigmas/30](http://www.pavelspuzzles.com/aenigmas/30).

# Adalogical Ænigmas

No. 30

(Page 2)

As I described in my missive on the first page of this ænigma, these below are the pentominoes that are to be fitted into the interior of the grid on that page as your first step in solving.

*Ada*

